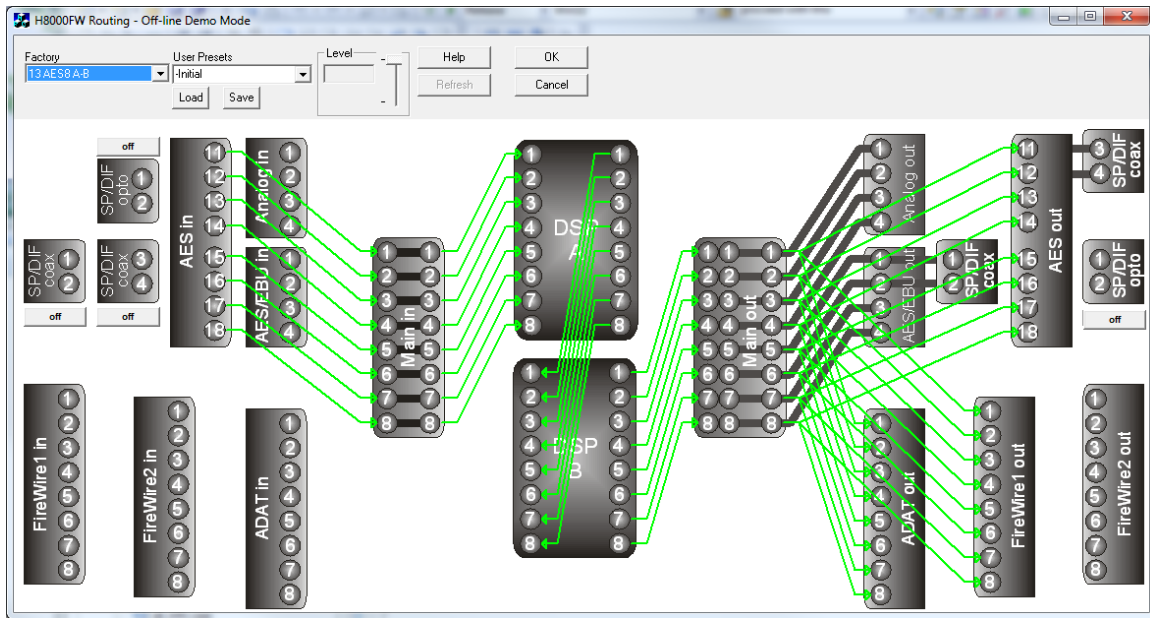


# Using the Routing Demo program



This program is intended to demonstrate the audio routing capability of the Eventide H8000™ family Harmonizer® brand effects processors. In the following text, these will be referred to as H8000, though they may also be H8000A or H8000FW.

It may be used stand-alone to gain an understanding of H8000's routing capabilities, or can be [configured](#) to connect via MIDI, RS232 or EVE/NET™ to an H8000 and will control it and also reflect changes in its settings.

Routing runs under Windows™ XP, Vista and 7. It requires between 5 and 10 MB of free memory to run. It will also run on Macintosh OSX Leopard and Snow Leopard. It has not been tested on earlier OS versions, which are not actively supported.

This version does not support Orville, Eclipse or earlier products.

*Harmonizer is a registered trademark of Eventide Inc. for its audio special effects devices incorporating pitch shift. H8000, H8000, Eclipse and Ultrashifter are trademarks of Eventide Inc.*

# Using the Routing Demo program

## *Operation*

Routing is a simple program whose operation should be largely self-evident:

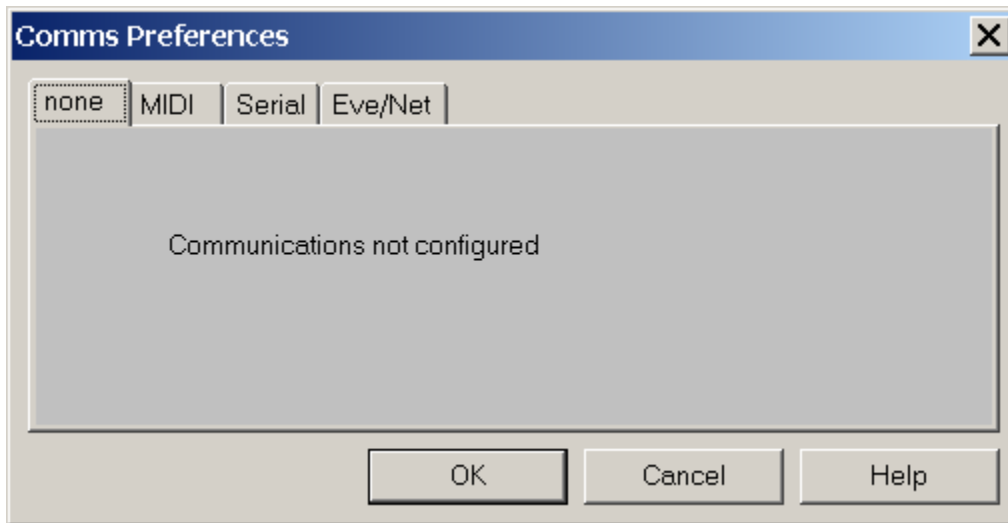
- Routing will run in **Off-line Demo** mode until it is connected to and has recognized an H8000, at which point, if properly configured, it will show ***connected*** and will display the H8000's current routing and gain settings.
- Click and drag between inputs and outputs to make connections. When an input or output is selected, the available partners will be highlighted by a **green** circle around them. At times, an unavailable connection will be indicated by a grey circle - this has been disabled by one of the [switches](#) described below.
- Multiple connections may be made between consecutive inputs and outputs by holding down the control key (*Ctrl* on PC, *command* ⌘ on Mac) when the connection is made.
- A connection may be *selected* by clicking on it, when it will turn **red**. It may then be deleted by hitting the delete key (*Del* on PC, *delete* ⌫ on Mac). Multiple connections may be "marquee" selected by drawing a rectangle around them with the left button held down on the mouse.
- The little fader can be used to change the gain of a *selected* input or output. Select inputs or outputs or connections by clicking on them. A selected input or output is indicated by the **red** circle around it. If the fader is "grayed out" (disabled) it means that the selected input or output has no gain setting.
- *Factory Presets* may be loaded by clicking on their name in the **Factory** drop-down list.
- Similarly, User Presets may be loaded by selecting them in the **User Presets** drop-down box, then hitting the **Load** button.
- Save user presets by typing in a name in the **User Presets** box or update a previously saved one by selecting it from the drop down list. In either case, then hit SAVE.
- If you hit **Cancel** to leave this program, a connected H8000 will be restored to how it was before you started this program. This state is stored under **Initial** in the **Factory Presets** list.
- In certain cases (e.g. S/PDIF vs AES selection), the H8000 settings may affect the routing choices - these are represented by grey switches (buttons) (marked "off" on the drawing on the previous page). Clicking these will toggle between "On" or "Off", or present a dropdown list for more choices.
- Right-clicking with the mouse in the main screen will bring up a menu allowing you to choose between the members of the H8000 family, make the display larger or smaller, change the screen colors or [configure the communications](#) with the H8000.

# Using the Routing Demo program

- This program should be used in conjunction with the H8000 User Manual, available for download in Adobe™ PDF® form at <http://www.eventide.com/~media/Files/Audio%20Support/H8000%20Series/Everyone/141103.ashx>

## ***Setting up communications***

If communications have not been configured, Routing will prompt you to set them up when you first try to communicate with a remote system. At other times you can access the communications Dialog Box *via* the **Comms Config** selection on the right-click menu. On a PC this can also be found on the System Menu (icon on left end of title bar), on a Mac it is under "Operations" on the main menu.



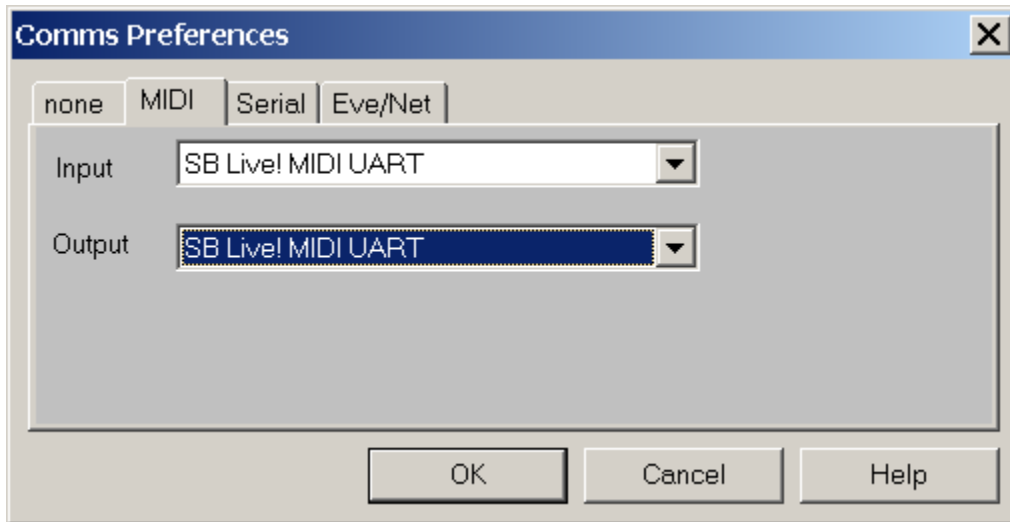
To run standalone, select **none** as shown above. Otherwise select the option most suited to your purposes. Note that both **MIDI** and **Eve/Net** usually require extra hardware for operation. For most PC users, **Serial** (RS232) will be the most suitable option - the COM: ports on most PCs are not overused and more can be added easily. If set at the highest baud rate the Eventide products currently support (115,200), an RS232 connection will be more than three times as fast as MIDI. In addition, you may be using your computer's MIDI connection for other purposes.

When using remote communications, make sure that H8000's **MIDI/setup/system exclusive** is set to **on**, and that **device ID** on the same screen is set to **1**.

Please note that Eventide can offer little help in setting up computers beyond that contained in this document - in the event of problems understanding or performing the following configuration you should refer to your computer hardware and software suppliers or other advisors.

# Using the Routing Demo program

## *Configuring MIDI*



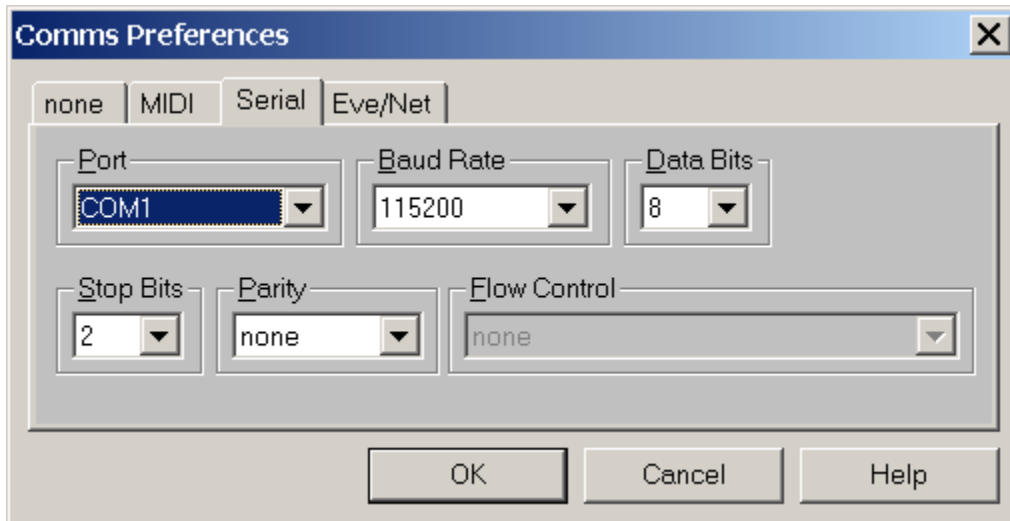
To configure Routing to use MIDI, you only have to set up two parameters as shown above. Be sure that your selections actually connect to the outside world - many of the possible options (usually labelled 'synth' or similar) are purely internal. The exact options will depend upon your computer hardware and may require a plug-in Sound Card. The above are the settings for a SoundBlaster™ Live! Card.

Then it is just a matter of connecting from your Sound Card's "MIDI out" connector to your H8000's "MIDI in" and vice-versa, using suitable 5 pin DIN cables.

A USB adaptor such as M-Audio's Uno is a more modern alternative.

# Using the Routing Demo program

## Configuring Serial (PC only)



In order to configure Routing to use serial communications, the above parameters must match those on your H8000's SETUP/MIDI screen.

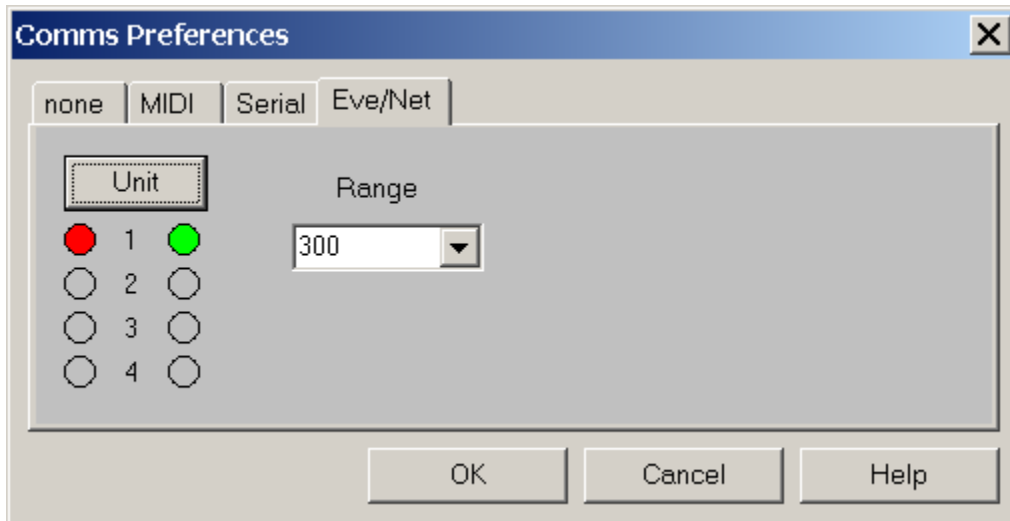
```
A: BPM ResoChords serial setup
serial: enabled parity: none
baud rate: 115200
data bits: 8
stop bits: 2
<| service | midi | external | display |>
```

Some older or slower computers may not be able to operate successfully at 115200 baud - some laptops seem especially poor at serial communications. If you suspect this applies to your computer, try a lower baud rate. Be sure to keep the H8000 and the PC in step !

It is necessary to connect from the selected COM: port to your H8000 using a suitable 9-pin cable. Note that this must be wired "pin 1 to pin 1," etc., and must **not** be either a "NULL modem" cable, or a "cross-over" type designed for file transfer between two PCs.

# Using the Routing Demo program

## Configuring EVE/NET



If your PC does not have the special hardware and software needed to support Eve/Net, the above screen may be "grayed out" or otherwise inaccessible. It will also be necessary for your H8000 to have an Eve/Net interface installed. Assuming that this is the case, to perform the configuration you need to connect the Eve/Net cable from the H8000 to the PC's Eve/Net adaptor (or connect the PC adaptor to an existing Eve/Net system), set the **Range** setting to agree with H8000 (**300** is the default and recommended value), and then select the Unit you wish to control. Like the Eve/Net remote, the green LEDs show the active connected units and the **Unit** button cycles through them, setting the red LED to show the selected unit.

On the H8000

- **mode** should be set to either **remote** or **local and remote**, normally the second.
- **Send** should be set to **MIDI** or **keys & MIDI**, the second if you are using the H8000 to control a second H8000.

A: BasicRoom	Network Setup
unit: 1	send: MIDI
mode: local & remote	load holdoff: 2.0s
status: active	versions: 1.1,0.0
range: 300 ft	
EVE/NET	